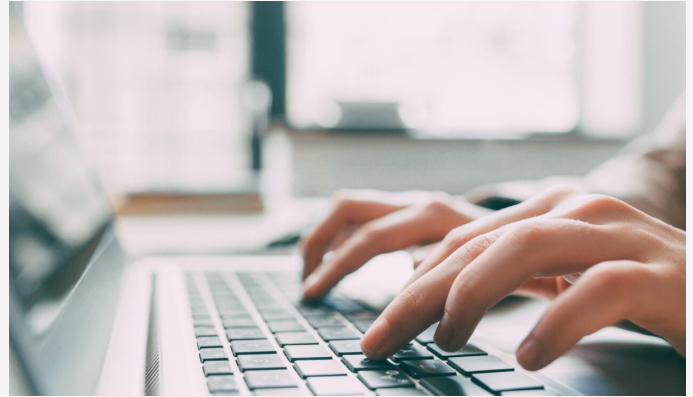


SERVICE

Case Assessment at Osler



Related Expertise

- [Capital Markets Regulatory Enforcement](#)
- [Class Action Defence](#)
- [Corporate and Commercial Disputes](#)
- [Corporate and Securities Disputes](#)
- [Discovery Management Services](#)
- [Domestic and International Arbitration](#)
- [Government Investigations and White-Collar Defence](#)
- [Intellectual Property Disputes](#)
- [Privacy and Data Security Disputes](#)
- [Private Equity and Investment Fund Disputes](#)
- [Risk Management and Crisis Response](#)

Actionable, data-informed advice that applies decision science

When managing complex disputes, smart business leaders assess risk with data-driven decision making guided by informed legal analysis. Osler's [National Litigation and Dispute Resolution](#) team has developed a systematic approach to case assessment that does just that.

Osler's case assessment considers each client's unique risk profile and explains disputes with easily digestible language and numbers, breaking down complexity for all stakeholders. It combines bespoke legal analysis, public litigation data, Osler's internal data on litigation outcomes, and decision tree software. This approach supports our clients in navigating litigation success on their own terms within a framework of realistic options and clearly monetized outcomes.

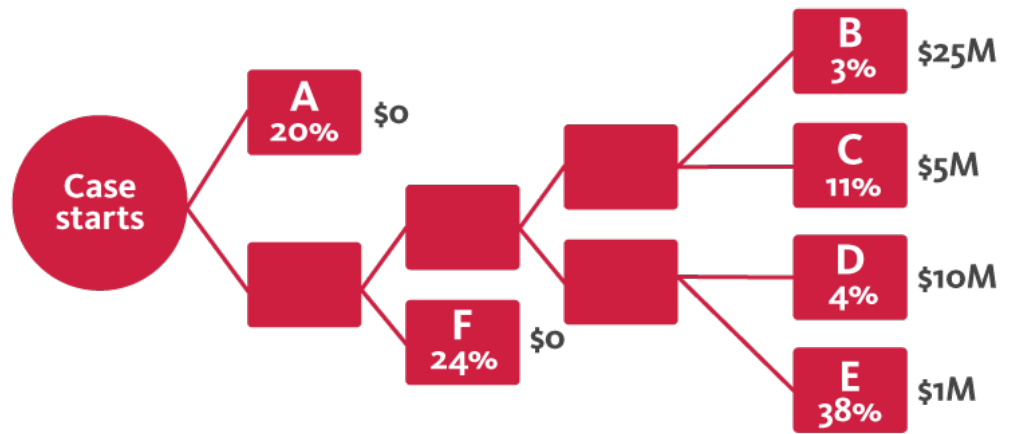
The benefits of an Osler case assessment

We recognize businesses need support in making difficult decisions in their disputes, and in communicating those decisions to their stakeholders. Traditional approaches to providing legal opinions don't always satisfy those needs. Case assessment can help provide a clearer picture with actionable advice.

To achieve this, we apply our market-leading litigation expertise through a third-party litigation-specific technology with intuitive visual planning and data insight tools.

When you ask Osler for an assessment of your case, we interview you, review your key documents, analyze your case and then break down that analysis into an easy-to-follow visual model, or decision tree. The decision tree maps the case's various steps and decision points and:

- collectively weighs the risk and range of outcomes stemming from each decision point;
- communicates the probability of each possible outcome; and
- calculates realistic outcomes and settlement recommendations.



Settlement Value: **\$2M**

Osler case assessment can work for you

While case assessment is relevant to all disputes, it can be especially effective:

- at the outset of a case when evaluating whether to proceed with litigation or settle;
- when considering a motion strategy;
- on an approaching mediation;
- before embarking on a costly trial; or
- at any point as a touchstone to keep everyone up to date and aligned over risk as a case evolves.

Want to know more? Contact [Charles Dobson](#) or another member of Osler’s case assessment team to see if this approach is right for your dispute.

Key Contacts



Charles Dobson
 Knowledge Management Lawyer,
 Disputes, Toronto



Mark Sheeley
 Partner, Disputes, Toronto



Jennifer Thompson
 Head, Osler Works – Disputes, Toronto